



GROWING PHILANTHROPY THROUGH THE FOUNDATION

2024 Annual Report



Table of Contents

Southern Delaware Drives Record Growth	3
The Arsht-Cannon Fund at 20	5
Philanthropy & Youth	7
Grants & Scholarships	8
Rodel Rolls Up Its Sleeves	9
Growing Delaware's Conservation Efforts	10
Mission, Vision & Values in Action	11
The Power of Partnerships	12
Nonprofit Funds	13
Legacy Society	15
Charitable Partners & New Funds	16
Leadership Campaign	17
Board & Committees	19
Financials	21
Our Team	22

OUR VISION

We envision a Delaware where generosity expands opportunity for all.



Dear Friends,

This past year, the DCF distributed the largest amount of grant dollars in our history – **a total of \$48,338,000**. This impact comes from many different efforts.

Included in those funds was a record-setting year in scholarships. DCF funds provided a record-setting **\$652,000 in scholarships** to more than 190 high school and college students from every corner of the state.

We celebrated the 25th anniversary of our Youth Philanthropy Boards. Since 1999, 700+ Delaware high school students have served, granting **\$806,021 to 165 organizations**.

It's the **20th anniversary** of our Next Gen Boards for young professionals. This year, Next Gen South fundraised and granted more than \$7,000 to Sussex and Kent nonprofits and Next Gen North relaunched to support nonprofits in New Castle County.

We have begun our planned expansion in Southern Delaware with the acquisition of a historic building in Lewes, the addition of a Philanthropy Officer and increased marketing efforts. **A \$400,000 grant from the Longwood Foundation** will aid in our efforts.

This year and next we are hosting one of the first **Bezos Earth Fellows** who is helping to guide our work in greening and environmental justice by building partnerships and creating opportunities along the Route 9 corridor.

DCF helped launch and continues to support Spotlight Delaware, a local journalism initiative delivering local news to subscribers three times weekly.

We are excited to be in the early stages of an effort to build more flexible funds at the DCF, to ensure that Delaware has resources to continue to address challenges today and for generations to follow.

We look forward to sharing more about this as our efforts evolve.

Most important of all, thank you again for all your support and your generosity of Delaware and its communities. Thank you for playing a part in the DCF's many achievements this year!



Yours,

Stuart Comstock-Gay
President & CEO

Drew Fennell
Chair, Board of Directors

PS: Special thanks to Board Chair Drew Fennell who has extended her term by one year. She will pass the reins to Vice Chair Chanta Howard-Wilkinson in FY26. We appreciate them and every Board member for volunteering to help make DCF the best it can be.

Southern Delaware Drives Record Growth

Southern Delaware has long played an active role in the success of the DCF, and never more so than in fiscal 2024 when, for the first time, half of the total number of donors came from Sussex and Kent counties.

"Since the pandemic, people here have amplified their participation in a dramatic way," said Mike DiPaolo, Vice President of Philanthropy & Southern Delaware. "In fact, over the last seven years, the number of individual donors from this region has risen annually, more than doubling, and the impact can be felt throughout the state."



Our new Southern Delaware location at 302 Savannah Road in Lewes.

Gordon & DiSabatino Join Philanthropic Services

This year, Jessica Gordon (right) was named Philanthropy Officer, Southern Delaware. Coming from Beebe Healthcare's communications team, she's focused on increasing DCF's capabilities, working directly with donors in the region. Cassie DiSabatino, who brings both advancement and marketing experience, serves as Donor Services Coordinator. She works closely with our donors and supports the PS team with data management and event organization.

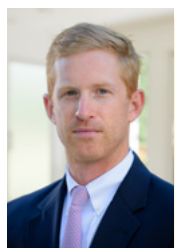


Cassie DiSabatino and Jessica Gordon.

"This property offers us a unique opportunity, one too good to pass up," said DiPaolo. "It will serve as a kind of 'living room' – a space specifically designed to foster discussion, host meetings and hold events."

In recognition of the importance of the building to the DCF's mission, and our overall growth in the region, the Longwood Foundation committed \$400,000 in a grant this year, identifying the DCF's expansion in Southern Delaware as a "catalytic project."

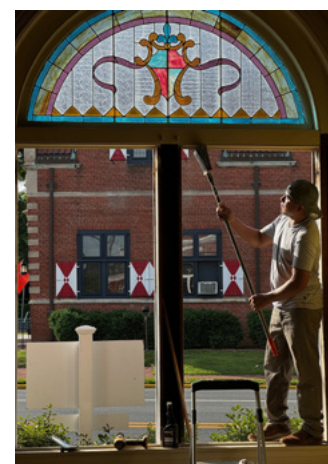
Another factor boosting participation has been the ongoing education efforts by the DCF with professional advisors, estate planners and trust attorneys. As they become more aware of the services offered by the DCF, they can better guide clients who are considering adding charitable and legacy gifts to their financial plans.



Robert S. Jeter II, CFP®, CRPC®, vice president and financial advisor with InFocus Investments, and president of the Southern Delaware Estate Planning Council, has seen this firsthand.

"Anytime I have a client with a charitable inclination, which is often, the DCF is my go-to resource," said Jeter. "Their team is able to clearly elaborate on options and demystify any misconceptions."

Recently DiPaolo and Jeter presented a retirement planning strategy session at the Lewes Library. Jeter added, "When people see how they are able to impact the community and benefit their own estate planning, it's a win-win."



Our building renovation made good use of its historic details, like this stained glass window. The building dates to 1898.

The Arsht-Cannon Fund at 20



Endowed as a donor-advised fund in 2004 by the late Honorable Roxana Cannon Arsht, Delaware's first woman judge, and corporate attorney S. Samuel Arsht, the Arsht-Cannon Fund (ACF) is celebrating its 20th anniversary, having granted \$12 million to date.

The Arsht-Cannon Fund reflects the couple's desire to "preserve, support, protect, and defend the best interests of a civil society" and will support their love for Delaware in perpetuity. Their daughter, Adrienne Arsht, philanthropist, attorney and former chair of the ACF Advisory Board, has focused ACF grants on programs that improve the quality of life for Hispanic Delawareans.

Dr. Christine Cannon, a Clinical Nurse Specialist and tenured Nursing Professor with a track record of volunteer nonprofit board leadership and family-focused research, began working with Adrienne, her cousin by marriage, and learning from Latino leaders in 2007.

"ACF's mission of 'supporting educational opportunities for Delaware's Latinos' has built capacity for a growing number of nonprofits, enabling them to reach, engage, and provide access to linguistically and culturally relevant programs and services needed by Latino families," she explained.



A recent event display highlighted the Arsht-Cannon Fund's values and goals.



The Honorable Roxana Cannon Arsht and S. Samuel Arsht (above) and Adrienne Arsht (right).

In 2024, the fund granted \$619,000 to 27 programs promoting language and literacy; developmental, academic and arts programs; educational advocacy; Latino small business development programs; health-related education, coaching and support; and several special initiatives.

For example, the ACF supports the Community English as a Second Language (ESL) Program, facilitated by forty volunteer instructors in Sussex County and online.



The fund works with many aspects of education, such as literacy efforts, tutoring and English as a second language classes for adults.

"We strive to create a welcoming community with access to high-quality language instruction and comprehensive support services ... (Grants from the Arsht-Cannon Fund help to) empower individuals and families to achieve their full potential and contribute to the fabric of our community," said Kate Cauley, Board Chair of the Community ESL Program Advisory Board.

Most grantee programs are provided in Spanish, so it is critical that staff, leaders, and volunteers are bilingual. This year's grant funding supports the salaries of 37 bilingual positions across grantee organizations.

A great example is first-time ACF grantee, Do Care Doula Foundation, Inc. Its mission is to decrease birth disparities within Black and Brown communities by increasing access to free and low-cost doula services. Funds will support recruitment, training, and ten new bilingual doulas.

A native Delawarean, Cannon's immigrant grandparents came to America in the early 1900s. "Their journey has made me sympathetic to the challenges that newcomers face – including the long path to citizenship."

Personal challenges, such as losing her daughter Jan as a young adult, stoke her empathy for those who have left behind or lost family members as a result of their journey to the United States.

Cannon and her husband Eric have four children and five grandchildren who all live locally. She is proud of the evolution of ACF's work to improve the lives of Latino families.

"These nonprofits are providing accessible and expanded programs with important results. Delaware benefits not only economically, but through more diversity, equity and inclusiveness. It is thrilling that ACF has had a role in these changes and successes."

To learn more about the 2024 Arsht-Cannon Fund grantees, visit www.arshtcannonfund.org.

Dr. Cannon's Commitment



Chris Cannon served as a clinical nurse specialist and a tenured (retired) nursing professor at the University of Delaware for two decades, earning a PhD in family studies.

Her commitment to ACF is one of her many contributions to the state, such as serving as:

- Board president, Lung Association of Delaware
- Representative to the American Lung Association
- Delaware's representative to the American Nurses Association
- Board member, Unidos US



Dr. Cannon celebrating Hispanic Heritage Month at a Sussex County festival.

Cannon was honored at the 2023 Delaware Hispanic Awards for her work in support of Latino-serving nonprofits. Other recent awards include:

- 2023 Purposeful Philanthropy Award - Philanthropy Delaware
- 2022 Charles J. Harrington Award for a Lifetime of Service - Christiana Care Health Services Board of Advisors
- 2018 Simon & Jill Shute Advocacy Award - NAMI Delaware
- The American Lung Association - The Emily Bissell Award for Lifetime Achievement

Philanthropy & Youth



Students impacting their communities through philanthropic giving – that’s the recipe for success of DCF’s Youth

Philanthropy Boards (YPB). This year, the boards celebrated their 25-year anniversary with a gala celebration where they granted a single-year record-breaking grant amount of \$71,492.

YPB was the vision of former DCF Board Member Phyllis Wynn. The first board, created in 1999, was a pilot program. Early success meant the program would grow to become three boards, one in each of the three counties in Delaware.

Many students who participate in the program go on to work for nonprofit organizations in the region and some come back to serve as mentors to current boards. Each student comes away with the feeling of having contributed to their community and all are given the unique opportunity to work in philanthropy at a young age.



Stuart Comstock-Gay and Delaware First Lady Tracey Quillen Carney celebrated the milestone with members of the Youth Philanthropy Board.



“YPB has been transformative for me. I’ve established connections with nonprofits across the state and feel empowered to make an impact. I’ve learned to collaborate with fellow board members and made good friends along the way. I’ll carry the lessons and experiences from YPB with me.”

- Chloe Spinoza, Kent County YPB Member

DCF Scholarships Change Lives

Generous donors have created dozens of scholarship funds at the DCF. These scholarships create opportunities every year, allowing Delaware high school students to follow their passions and dream big while focusing on what's important: academics. In fiscal year 2024, DCF awarded \$652,000 in scholarships to nearly 200 students.

ABBY BETTS

At Cape Henlopen High School, Abby Betts thought she was on the path to a career in the medical field. But in her senior year, she took Advanced Placement Art which brought two of her passions, art and the medical sciences, together. The pieces she created were anatomical art, a way to look at the human body from another perspective.

After graduating, Betts was accepted to New York University. She is studying at the prestigious Gallatin School of Individualized Study where students embark on an interdisciplinary courseload. Betts said she is able to attend NYU because of the help of the John M. Roca Memorial Scholarship she was awarded by DCF.

"A big part of my college decision was about the best fit, academically and financially. The DCF scholarship was important because it gave me the freedom to choose a school like NYU," said Betts.



SILVANA NASIM

Silvana Nasim is the oldest daughter of two immigrant parents. A graduate of Caesar Rodney High School, Nasim was accepted into Princeton and had the benefit of receiving the four-year renewable Kelly Family Scholarship from DCF to help cover the cost of the Ivy League school.



"I was able to rely on the Kelly Family Scholarship consistently every year," said Nasim. "The scholarship relieved much of the financial burden I would have otherwise faced and allowed me to explore various life-changing opportunities at Princeton, from state-of-the-art research facilities to world-renowned faculty."

Now a proud Princeton graduate with a degree in sociology, Nasim is pursuing a position as a pre-doctoral research assistant at Princeton's Education Research Section with one of her professors. She plans on pursuing a career in academia as a professor, following in the footsteps of her two parents who are both teachers at Caesar Rodney High School.

"My passion to contribute positively to my social and professional setting was cultivated and grew at Princeton, thanks to the Kelly Family Scholarship, and thanks to the experience I had as a member of the Youth Philanthropy Board, where I first caught a glimpse of what it means to engage with the needs of my community." ~ Silvana Nasim

Rodel Rolls Up Its Sleeves for Equity

Rodel, a supporting organization of the DCF, partners with Delawareans and educational innovators from around the world to transform public education in the First State.



Rodel co-hosted Early Childhood Advocacy Day, bringing over 100 community members together in Dover.

The Rodel team goes to work each day seeking ways to improve kids' lives, working toward an excellent and equitable public education system. Under the lead of Paul Herdman, the 14-person staff approaches this mission by convening cross-sector partners, connecting good ideas to resources, scaling ideas that are grounded in evidence and practice, and serving as a trusted advisor.

Take, for example, the Career Pathways initiative. Beginning with just 27 students 10 years ago, more than 30,000 Delaware high school students – about 70% of the state – participated this year. Pathways introduces students to career options through coursework and work-based learning. With the goal of reaching students even earlier in their education, a new pilot program for 5,500 middle school students has launched, helping them identify areas of interest for high school and beyond.

In other successes, Rodel's advocacy efforts in early care and education have led to increased access in state-funded childcare and pre-K, serving 2,000 additional children in 2023. Its educator diversity and retention work supports the recruitment, development and retention of teachers already in our communities, in what is becoming one of the best "Grow Your Own" strategies in the nation.

One major focal point for Rodel is the program Fair Funding, for which it serves as the convener of coalition partners and national experts working to rethink Delaware's \$2 billion education budget so that is more equitable and supports every student's unique needs.

Herdman shares that a new governor and potential changes to the political landscape will make the coming year pivotal for education.

"We are rolling up our sleeves to work with Delawareans of all backgrounds, including the governor, cabinet leaders, legislators and key leaders in our schools, to create the next 10-year policy roadmap for education. Our democracy is built on an informed populace, and we're committed to making Delaware's one of the best in the world."



Rodel board of directors visited Kuumba Academy's middle school Career Pathways pilot in the spring of 2024.

Growing Delaware's Conservation Efforts

This year, the DCF has been involved in partnerships that will increase green space, support land preservation and protect our natural resources. Here are some of our key efforts.

Bezos Earth Fund

In 2023, Wilmington was selected as one of five cities in the U.S. to receive funding from the Bezos Earth Fund to support urban greening as a part of the Earth Fund's Greening America's Cities initiative. It is one of the largest-ever funding initiatives to put money directly into the hands of community organizations. As part of a two-year grant, DCF is hosting Laura Semmelroth, a Bezos Earth Fund Fellow. She is helping the Claymont Coalition for Environmental Justice and the New Castle Prevention Coalition (NCPC) with greening efforts, focusing on projects that include land reclamation, native plant and tree cultivation, and green workforce development. True community leaders, they support and work in historically underserved communities in the Wilmington area.



Mt. Cuba Center Conservation Fund



The Mt. Cuba Center Conservation Fund at DCF is a donor-advised fund that like its namesake is focused on land acquisition and protection. The organization is one of a few nonprofits in Delaware focused on preservation of land to protect the habitats of local plants and animals.

In January 2024, the center, through its fund at the DCF, contributed over \$10 million to help facilitate the Granogue estate purchase and fulfill the project's mission of conserving the open space and vital habitats supported on the property.

Delaware State Parks Expansion Prompts Endowment Growth

In late 2023 and early 2024, Delaware State Parks acquired an additional 275 acres of land from the estate of long-time conservationist, William K. du Pont, to expand White Clay Creek State Park. To further underscore the family's commitment to open space preservation, his granddaughter Sabrina du Pont-Langenegger and her husband Conrad Langenegger gifted \$1.3 million to an endowment in his name to support the stewardship of State Parks.



We Stand At The Crossroads

The DCF The DCF serves as the intersection where generosity and community transformation meet. It is what we do best and what makes us unique.

We focus on five specific ways to engage with communities to help move the people and places of our state forward:

LEAD WITH EXPERTISE & EXPERIENCE:

With nearly 40 years of experience and a holistic approach to philanthropy, we understand the differences and similarities of our diverse communities.

STEWARDS FOR TODAY AND FOREVER:

Donors make commitments knowing that funds under our stewardship will be used to help fulfill their charitable goals and make positive, sustainable change with and for Delaware.

CONVENERS & CONNECTORS: We work with others on challenges of all shapes and sizes, connecting people and resources to make positive change possible.

COMMITTED TO INCLUSIVITY:

Everyone should be welcome in our state and have the opportunity to thrive, and we are committed to making that a reality.

JOYFUL PARTNERS: There is true joy to be found in philanthropy and we never take for granted the impact the DCF and its donors have on real people, families and communities.

This is how we together achieve our vision:

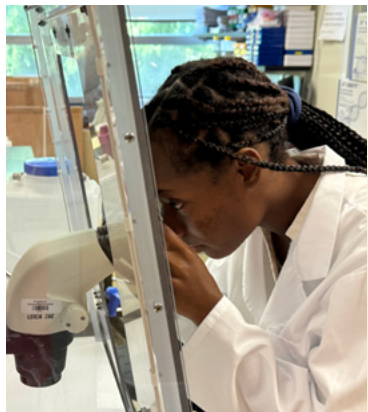
**A DELAWARE WHERE GENEROSITY
EXPANDS OPPORTUNITIES
FOR ALL.**



Dear Freedom Writer author Erin Gruwell (center) poses with a group of Wilmington high school students at the 2023 Building Opportunity Keynote event. The annual event brings the community together with an author to discuss community challenges and possible solutions.

The Power of Partnerships

The DCF works with many partners – fundholders, Giving Circles and dozens of organizations – to create and achieve change. Here is a look at some of the ways individuals and organizations partner with us and better our world.



Leave a Legacy Through the DCF

Establishing a legacy begins when passionate people seek to create change in their communities. Through planned giving, donors can impact future generations by making meaningful gifts that extend beyond their lifetimes.

This was how the Paul H. Boerger Fund at the DCF was created. In 2020, through a planned gift in his will, Mr. Boerger provided for a fund that reflected one of his passions - the desire to support research to prevent and/or cure Alzheimer's disease. Today, it is delivering on his promise, issuing grants to research institutions within the specific parameters of the funding. In 2023, the first cycle

of grants totaling \$6.075 million was distributed to three regional research institutions: Delaware State University, the University of Delaware and University of Pennsylvania.

Collaborations

We work with partners such as Delaware State Parks, Rodel, the Arsht-Cannon Fund and Highmark Delaware to build opportunity and improve the quality of life in our state.

Delaware State Parks Division Director Raymond E. Bivens explains it well. "The DCF is a key partner in the Delaware Division of Parks and Recreation's work throughout Delaware. Our partnership allows us to provide residents with safe and enjoyable recreational opportunities through the use and maintenance of our amazing state parks, as well as our continued work in conserving key land spaces in Delaware and overseeing of statewide recreational activities."



Giving Circles – The Power of a Group

The DCF is home to several Giving Circles including Fund for Women, the African American Empowerment Fund of Delaware (AAEFD) and The Next Generation, known as Next Gen South and Next Gen North, for young professionals. These groups engage thousands of Delawareans in collective philanthropy, pooling their individual charitable resources to maximize their impact on shared passions.

According to Melanie Daniels, chair of the AAEFD, "The DCF has been a great partner, supporting the African American Empowerment Fund fulfill its mission. We are establishing a legacy of leadership and funding causes important to the education, social and economic empowerment of African American Delawareans."

Nonprofit Funds

Currently, nearly 200 public charities and other charitable entities from throughout the state have established funds at the DCF. We provide expertise and services that make it easy for our nonprofit fundholders to build their endowments and long-term funds for greater financial stability, increase donor confidence, provide donors with a way to make planned gifts, and increase their organization's visibility.

OUR NONPROFIT FUNDHOLDERS

ACLU Foundation of Delaware
AIDS Delaware
Amanecer Community Counseling Service
American Planning Association - Delaware Chapter
Andrew McDonough B+ Foundation
Arc of Delaware
Bethel African Methodist Episcopal Church
Big Brothers Big Sisters of Delaware
Biggs Museum of American Art
Bike Delaware
Blindsight Delaware
Blood Bank of Delmarva
Boys and Girls Clubs of Delaware
Cab Calloway School Fund
CAMP Rehoboth
Cancer Support Community of Delaware
Canine Partners for Life
Careys Church
Catholic Charities
CenDel Foundation
Charter School of Wilmington
CHEER
Child Help Foundation
Children & Families First
Children's Advocacy Center of Delaware
ChristianaCare
Coastal Concerts
Communities in Schools of Delaware
Community Legal Aid Society
ContactLifeline
Corbit-Calloway Memorial Library
Delaware 4-H Foundation
Delaware Agricultural Museum & Village
Delaware Botanic Gardens
Delaware Breast Cancer Coalition
Delaware Burn Camp
Delaware Center for Contemporary Arts
Delaware Center for Horticulture
Delaware Center for Justice
Delaware Chapter American College of Surgeons
Delaware City Public Library
Delaware Coalition Against Domestic Violence

Delaware Community Reinvestment Action Council
Delaware Division of Libraries
Delaware Futures
Delaware Guidance Services for Children and Youth
Delaware Hospice
Delaware Library Association
Delaware Medical Education Foundation
Delaware Military Heritage and Education Foundation
Delaware Museum of Nature & Science
Delaware Nature Society
Delaware Performing Arts Center
Delaware Preservation Fund
Delaware Public Media
Delaware Recreation & Parks Society
Delaware Seashore Preservation Foundation
Delaware State University Foundation
Delaware Volunteer Legal Services
Delmar Public Library
Del-Mar-Va Council, Boy Scouts of America
DASEF
DE NAHRO
DFRC
Easter Seals Delaware & Maryland's Eastern Shore
Eastern Apicultural Society
Edgemoor Community Center
Elizabeth W Murphey School
Epilepsy Foundation of Delaware
Federation of International Lacrosse
First State Animal Center and SPCA
First State Community Action Agency
First State Robotics
Foundation for Fresh Produce
Frankford Public Library
Fresh Start Scholarship Foundation
Friends of Delaware Veterans
Friends of the Bear Library Association
Friends of the Woodlawn Library
Friends of Woodburn
Georgetown Aid
Georgetown Grace United Methodist Church
Georgetown Presbyterian Church
Georgetown Public Library

Girl Scouts of the Chesapeake Bay Council
 Goodwill Industries of Delaware and Delaware County
 Grace United Methodist Church
 Greater Lewes Foundation
 Greenwood Public Library
 Habitat for Humanity of New Castle County
 Harrington Public Library
 Harry K Foundation
 Historical Society of Delaware
 HOBY (Hugh O'Brian Youth Leadership Organization) Delaware
 Home of the Brave Foundation
 Housing Alliance Delaware
 Humane Animal Partners
 Immanuel United Methodist Church
 In Trust Center for Theological Schools
 Ingleside Homes
 Jewish Family Services of Delaware
 John Wesley United Church
 Junior Achievement of Delaware
 Junior Board of Christiana Care
 Junior League of Wilmington
 Justin W Jennings Foundation
 Kalmar Nyckel Foundation
 Kent County Public Library
 Kent-Sussex Industries
 Kiwanis Foundation of the Kiwanis Club of Seaford
 Kutz Senior Living Campus
 Latin American Community Center
 Laurel Community Foundation
 Laurel Public Library
 Lewes Public Library
 Limen Recovery + Wellness
 Lutheran Church of Our Savior
 Lutheran Community Services
 Mary Campbell Center
 Modern Maturity Center
 Mental Health Association in Delaware
 Milford Housing Development Corporation
 Milford Public Library
 Millsboro Public Library
 Milton Historical Society
 Milton Public Library
 Mispillion Art League
 NAMI Delaware
 Needy Family Fund
 NeighborGood Partners
 New Castle County Dept. Of Community Services
 Newark Symphony Orchestra

Opportunity Center
 Overfalls Foundation
 Partnership for the Delaware Estuary
 PAWS for People
 Pencader Heritage Area Association
 People's Place II
 Planned Parenthood of Delaware
 Port Penn Historical Society
 Presbyterian Church of Dover
 Preservation Delaware
 Prevent Child Abuse Delaware
 Quiet Resorts Charitable Foundation
 Read Aloud Delaware
 Reading ASSIST Institute
 Rehoboth Beach Film Society
 Rehoboth Beach Public Library
 Rodney Street Tennis & Tutoring Association
 Ronald McDonald House of Delaware
 St. Andrew's Evangelical Lutheran Church
 St. Edmonds Academy
 St. Francis Foundation
 St. John's United Methodist Church
 St. Mark's High School
 St. Michael's School and Nursery
 Salisbury University Foundation
 Seaford District Library
 Selbyville Public Library
 Siegel Jewish Community Center
 Smyrna-Clayton Heritage Association
 Smyrna Public Library
 South Coastal Library
 Spur Impact
 STEHM
 Sussex County Association of Realtors
 Community Service Foundation
 Sussex County Habitat for Humanity
 Sussex County Land Trust
 Sustainable Energy Utility
 Tatnall School
 Trinity Foundation
 United Way of Delaware
 Village Improvement Association
 West End Neighborhood House
 Westminster Village Dover
 Westside Family Healthcare
 Wilmington Children's Chorus
 Wilmington Friends School
 Wilmington Senior Center
 YWCA Delaware

**Nonprofit fundholders are public charities, religious institutions and government agencies that have established funds at the DCF to support their charitable work for our communities. Organizations that are beneficiaries of funds established by other donors are not included in this list.*

Legacy Society

G. Lawrence Adams
Paula Allen
Charles C. Allen III and
Barbara Norris Allen
Gwendoline Angalet
Robert and Carol Baker
Bernard & Helen Balick
Larry and Linda Barnett
Effie Barnhill
Thomas and Mona Bayard
Paul and Beth Bechly
Katherine Beck
Jessie and Richard Benjamin
James and Rosalyn Bishop
Robert and Katherine Boyd
Gavin and Louellen Braithwaite
Karen Brause and
Kimberly Schaffer
Bobby and Joan Brown
Dr. Sarah Brown
Gloria Burton
James Carlo
Patricia Chappelle
Ross Claiborne
Valerie and Robert Cloutier
Francis and Addie Cole
Richard and Dolores Colgate
Constance Cooper
Steve Cullen and Jo Brown
Harry Daisey
Andrew and Paulette Davidson
Kathryn Davis
Herman DiLuchio
Eugenia Athan Dugdale
Theodore H. Dwyer Jr.
Donald and Nancy Edwards
Gary and Cindy Emory
Jean Gandek
Ajit George
J. Robert and Jane Gibson
Harry and Lynn Glaze

Donald and Abigail Greene
Keith and Kimberly Grube
Lawrence Guthrie
Susan Redmon Hall
Selma Hayman
Gene and Rose Mary Hendrix
Stephen and Susan Herrmann
Robert Hickman and
Barabara Murray
Ann Hilaman
Joan Hoge-North
Wayne and Betsy Holden
Kusuma and Ramachandra
Hosmane
Frank Hyde and Judi Hilton Hyde
Marilyn Hyte and Patricia McGee
Bonnie Jackson
Katherine Johnson
Trena and Robert Kelly
Glenn Kenton
Mary Jane Kimmins
Jan King
Renata Kowalczyk
Jean and Joseph Kowinsky
Brian and Janet Kramer
Bill and Keiley Lafferty
Andrew Langsam and Cabella
Calloway Langsam
Hugh and Kathleen Leahy
Richard and Mary Legatski
Jack and Patricia Leshar
William D. Luke Jr.
Nancy Maihoff, PhD
Elaine Markell
Robert Martz
Robert McCrone and
Nancy Joyce McCrone
Susan R. Miller and
Maggie Roth
Stephen and Maria Mockbee
Dee & Bob Moore
Mary Jo Moore

Gary C. Myers Jr.
Philip Nicotra
Brian and Linda O'Connor
Austin Okie
James and Kateryna Orth
Joseph and Linda Outlaw
Alan and Yvonne Palmer
Donald and Ethel Parsons
Andrew and Michelle Partyka
Benjamin and Laura Phillips
Elizabeth Poole
Brian and Joy Read
Donald and Lois Richards
Karen Ritgert
Charles and Patricia Robertson
Richard and Cynthia Rowland
Sioux Saloka
Howard and Michele Sands
Carl and Doris Schnee
Jeanne Otis Shields
Theresa Silver
Joni Silverstein
Carolyn and Phillip Smith
Kathleen Duffy Smith
Robert P. and Tina M. Sonzogni
Sandra Spence
Howard and Alma Swank
Lawrence Swigert
Geneolga Tadlock and
Virginia Reime
Philip Timon
John Tobin and Lisa Diller
Reade and Sarah Tompson
Robert D. Ullrich
Jane and Andrew Vincent
Matthew Waschull
Richard and Anne Wier
John and Beverly Wik
Kurt Winkler and Susan Clifton
Thomas and Diane Wren

New Funds

EST. Fiscal 2024

1787 Fund
21st Century Children's Fund
512 Fund
Benjamin Campbell Memorial Fund
CAMP Rehoboth David Mixner Fund
Chris Barnum Memorial Fund
Community ESL Program Endowment Fund
Dover High School Alumni Scholarship Fund
Elizabeth B. Devine Fund
Kathryn Beck Music Scholarship Fund
Ladell Brim Reeves Memorial Fund
Lewis Lazarus Fund
Nellie G. Allen Curiosity Shop Scholarship Fund
Nellie G. Allen Curiosity Shop Service Fund
Quinn Family Fund for Catholic Education
Robert Ralph McCrone and Nancy Joyce
McCrone Fund
Ted Blunt Memorial Fund
William K. DuPont Stewardship Fund
YWCA Delaware Empowerment Fund
YWCA Delaware Empowerment Fund II

*To discuss how you can leave
a legacy of generosity, contact
Mike DiPaolo, Vice President for
Philanthropy & Southern Delaware,
mdipaolo@delcf.org 302.335.6933.*

Charitable Partners

*Our Charitable Partners Program
helps professional advisors continue
to manage client relationships and
assets while the DCF provides
expertise in tax-advantaged giving,
as well as the community knowledge
and relationships to help clients
achieve their philanthropic goals.*

Paul Bechly
Morgan Stanley

Jordan Daniels
Creative Planning, LLC

Kit Daniels
Creative Planning, LLC

Brian Davis
UBS

William C. Dugdale
Bernstein Private Wealth Management

Mark Fitzpatrick
Morgan Stanley

Duane Oakes
SEI

Anthony Gambacorta
TD Private Client Group

Garrett Hadley
Morgan Stanley

The HART Group/Thomas Rice
Merrill Lynch

Charles Mitchell
Morgan Stanley

Peter Oldziej
Peter Oldziej & Associates

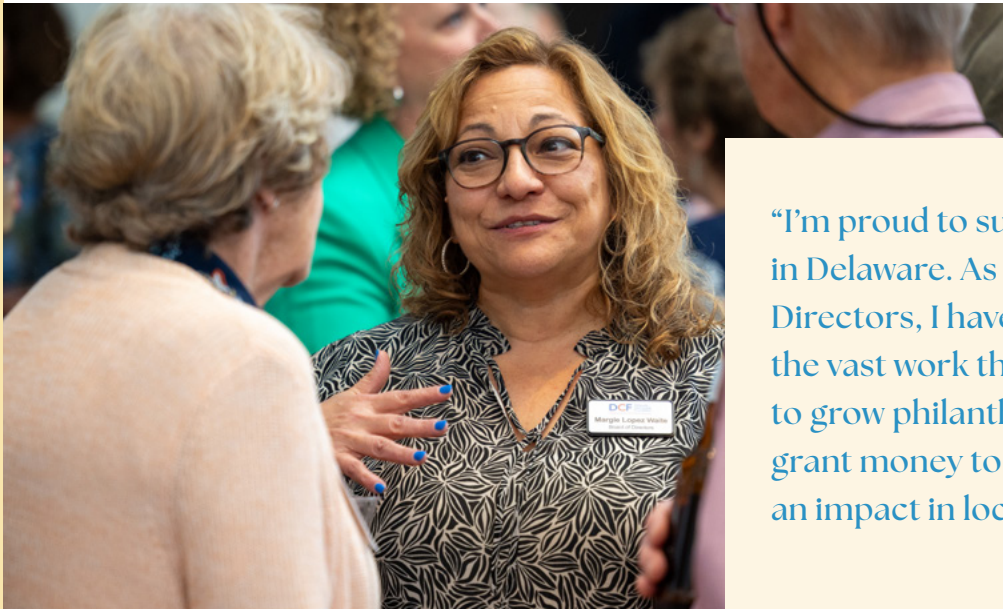
Joseph Pietrafitta
TD Private Client Group

Gary Ulrich
The Financial House

Peni Warren
Merrill Lynch

Leadership Campaign

Since 1986, the DCF has been providing community leadership that benefits Delawareans throughout the state. Thanks to the generosity of our Annual Leadership Campaign donors, the DCF has been a powerful force for good for nearly 40 years, serving as a facilitator, connector, cultivator and source of community knowledge.



“I’m proud to support the DCF’s efforts in Delaware. As a member of its Board of Directors, I have first-hand knowledge of the vast work the staff puts into their efforts to grow philanthropy in Delaware and to grant money to other nonprofits to make an impact in local communities.”

~ Margie López Waite
DCF Board of Directors

Community Builders (\$10,000+)

Discover Bank
Tom Pulsifer
SEI Investments
Rod & Gina Ward

Community Partners (\$5,000-\$9,999)

DuPont Company
Tom & Nancy Sager
Wakefield Family Fund, Inc.

Ambassadors (\$2,500-\$4,999)

Ashley & Shoshana Altschuler
Stuart & Lucy Comstock-Gay
Lear & Gary Pfeiffer
David & Elaine Singleton

Benefactors (\$1,000-\$2,499)

Sam & Mariah Calagione/Red Wagon
Calagione Family Foundation
Daniel Cruce
Drew Fennell
Tom & Cathy Franceschini
William & Megan Goeller
David & Ashley Harris

Fifi Hiotis-Blackburn
Chanta Howard-Wilkinson
Kimberly & Larry Kimmel
Jim & Georgia Mazarakis
David & Sally McBride
Norman Monhait & Marcia Halperin
Charles Pohl & Janice Nevin
Nor'Easter Foundation
Ben & Carol Osbun
Louie Phillips
Tamika Montgomery Reeves & Jeff Reeves
Dennis & Beth Salter
The Honorable Gregory Sleet
Alicia Smith
William & Christine Sudell
Edward & Judy Tarlov
Anne Verplanck & Philip Verplanck
William & Barbara Wade
Katie & David Wilkinson
Ronald & Janet Yabroff

Patrons (\$500-\$999)

Frank & Marcella Alberio
Judy & Rich Allen
Jack Blumenfeld

Crystal Clough
Pam & Douglas Cornforth
Steven Director
Michael & Catherine DiSabatino
William Dugdale & Sydney Van Dyke
Mukteeshwar & Surekha Gande
Donald Gouge
Peter & Susan Horthy
Lynn & Leslie Jones
Peter Kennedy
Rob & Alice Martinelli
John & Peggy McDevit
Alison & Kyle McSllarrow
Rex & Sharon Mears
Brian & Kay Preston
Steve & Judy Schwartz
Fred Sears
Thomas & Linda Shopa
Robert & Kathleen Siegfried
Don Sparks
Michelle Taylor

Supporters (\$250-\$499)

William & Jeanne Allan
Bancroft Construction Company
André & Sally Beaumont
Joyce & Michael Darling
Stan & Martha Diver
Edgewell Personal Care
Alan Evantash & Peggy Lubin
Robert Feinson
George & Lynch Inc.
Jeff & Linnea Goddess
Richard & Dorothy Harper
Mary & Bob Hickok
Hugh & Kathleen Leahy
Margie López-Waite
Charles & Mary Lou McDowell
Leslie Newman & Bill Wolff
John & Nadine Noble
William & Mary Jo Russell
Richard & Maribeth Przywara
Michele Sands
Sassy 302 LLC
Kelly Sheridan & Debra Quinton
William & Judith Spruance
Jay & Sharon Stevens
Howell & Margo Wallace
Melville & Peni Warren

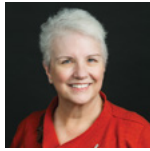
Michele & Robert Whetzel
Elizabeth & Edward White
Margery Windolph
Kenneth Wynn

Contributors (\$1-\$249)

Robert Abel
Nancy & Jay Blumberg
J. M. & Sandra Bowman
Ms. Christine Walker Briedis
David Brown
Don Brown & Lynne Howard
Stephanie Carpenter
Martha Carper
Steven & Deborah Casey
Jamie & David Doane
Zita Dresner
Marlene Elliott-Brown & James Brown
R. Mark Fitzpatrick
Anthony M. Frabizzio
Edward Freel
Thomas & Marie Forrest
Gail Garbutt
Peter & Susan Gilman
Richard Givens
William & Rosalinda Graham
George & Julie Guido
Susan & Stephen Herrmann
Edmond & Annamarie Ianni
Dan & Mary Klein
Laird Stabler III & Associates, LLC
Frances Leach
Charlotte Lister
H. David & Gerrie Lunger
Matt & Nancy Lynch
Cynthia Primo Martin & Josh Martin
Deirdre A. O'Shea McCartney
Christopher & Mary Patterson
Vernon & Margaret Proctor
J. K. & Betty Riegel
Roberta Raffish & Clay Tarpley
Rita Speakman
Lauren & Andrew Stayton
Stewart-Properties I, LLC
Donna Stinson
Michael Walls
Don & Anne Ward
Daniel Weintraub & Nancy Fleming
Michael & Jan White

Our Board Members

OFFICERS & EXECUTIVE COMMITTEE



Drew Fenell, Chair

Executive Vice President of Impact, Operations, and Regional Development, Social Contract



Chanta Howard-Wilkinson, Vice Chair

Human Resources Consultant, Vantige, Inc.



Peter S. Kennedy, CPA, Treasurer

Director, Cover & Rossiter



Cindy L. Szabo, Esq., Secretary

Partner, Morris James, LLP



Margie López Waite

Head of School, Las Américas ASPIRA Academy



Dan Cruce

Chief Operating Officer, United Way of Delaware

DIRECTORS



Ashley R. Altschuler, Esq.

Managing Partner, McDermott Will & Emery LLP



Alonna Berry

Senior Director, Social Contract



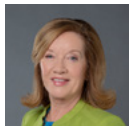
Mariah Calagione

Co-Founder, Dogfish Head



Charles Elson

Chair in Corporate Governance, University of Delaware



Lynn Evans

Director, Women's Leadership Initiative



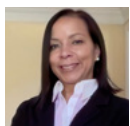
Kelly E. Firment

Senior Vice President and Small Business Client Care Executive, Bank of America



Lossie Freeman

Director of Corporate Relations, ZipCode Wilmington



Frances Gauthier

Litigation Director, Legal Services Corporation of Delaware



Molly Giordano

Executive Director, Delaware Art Museum



Hon. Tamika Montgomery-Reeves

Circuit Judge, United States Court of Appeals for the Third Circuit



Louisa Phillips

Retired Healthcare Executive



Dr. Vita Pickrum

Vice President, Div. of Institutional Advancement, Delaware State University



Charles O. Posnecker

Senior Financial Advisor, Bryn Mawr Capital Management



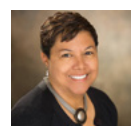
Chrissi Rawak

Director of Athletics, Community and Campus Recreation, University of Delaware



Hon. Gregory M. Sleet

Retired, U. S. Attorney for the District of Delaware



Michelle A. Taylor, Ed.D.

President & CEO, United Way of Delaware

Our Committees

Audit & Compliance

Kelly Firment, Chair
Peter S. Kennedy

Communications & Marketing (Ad Hoc)

Mariah Calagione
Drew Fennell
Chrissi Rawak

DCF Healthy Communities Delaware LLC

Stuart Comstock-Gay
Don Fulton
Chanta Howard-Wilkinson
Rita Landgraf
Dr. Vita Pickrum
Karyl Rattay
Eugene Young

Equity

Greg Sleet, Chair
Kelly Firment, Vice Chair
Bill Dugdale
Lossie Freeman
Chanta Howard-Wilkinson
Donald W. Nicholson, Jr., CFP, AAMS

Finance

Peter S. Kennedy, Chair
Ashley Altschuler
Pam Cornforth
Robert W. Pierce

Grants

Louisa Phillips, Chair
Sherita Belle
Carolyn Bray
Don C. Brown
Mariah Calagione
George Cardwell
Katherine Cauley
Gina Cronin
Melanie Daniels
Yvonne Deadwyler
Tierra Fair
Joseph Farris
Norma Gaines-Hanks
Yvonne Gordon
Todd B. Hammond
Chanda Jackson
Lu Johnston

Laura Lloyd
Jillian Mackenzie
Katie Millard
Kimberly Morton
Dr. Vita Pickrum
Allison K. Pierce
Charles O. Posnecker IV
Frank J. Robinson
Michael Staman
Andy G. Truscott
Margie López Waite
Enid Wallace-Sims
Dia Williams-Adams
Kim Willson

Investment

Lynn Evans, Chair
Charles O. Posnecker IV, Vice Chair
Pam Cornforth
William Dugdale
John du Pont
Kathleen Hawkins
Marilyn R. Hayward
Hayes Roberts
Gordon Stone

Nominating

Chanta Howard-Wilkinson, Chair
Dan Cruce
Lossie Freeman
Margie López Waite
Dr. Vita Pickrum

Personnel & HR Consultant

Kathleen Furey McDonough

Potter Trust

Mike DiPaolo
Jane Libby
Mary Moor
Michael Rushde
Jeremy Tucker

Scholarship

Tanya Bell-Hynson
Sylvia Brooks
Don C. Brown
Emily Bryant-Alvarez
Jenine Buchanan
Janice Colvin
Vincent Farrell

Edee Fenimore
Dana Harris
Saundra Hayward
Liz Jordan
John McDevit
Peggy McDevit
Jane McFann
Dr. Richard Plotzker
Dr. Linda Poole
Janine Sorbello
Dr. Neysa Smith
Angela Suchanich
Janet Yabroff
Carolyn Zogby

Youth Philanthropy Advisory

Kent County
Doug Crouse
Matthew Sacks

New Castle County

Calisa Emerson
Christa House
Neil Kirschling
Caroline McDonough
Molly McPheeters
David T. Woods

Sussex County

Keda Dorisca
Philip Gordon
Madelyn Wright

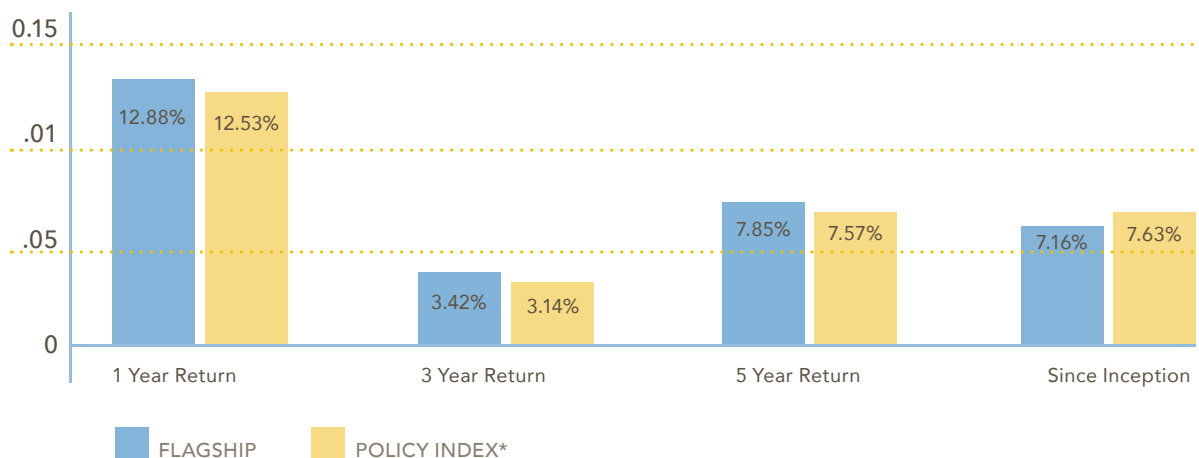
Financials & Investments

As a public charity, the DCF is committed to transparency to our fundholders and the broader community we serve. To review our Federal Tax Return Form 990s, investment policy, and fully audited financial statements, visit delcf.org/financials-and-investments.

June 30, 2024 and 2023

ASSETS	2024	2023
Cash and cash equivalents	\$4,456,131	\$9,359,165
Investments	354,903,164	350,488,548
Notes receivable	2,121,185	1,221,134
Unconditional promises to give	1,143,002	155,528
Other receivables	123,282	268,227
Fixed assets - net	1,016,834	96,489
TOTAL ASSETS	\$363,763,597	\$361,589,091
LIABILITIES	2024	2023
Grants payable	\$0	\$0
Other accrued expenses	383,916	495,834
Property Loan	969,637	\$0
Charitable gift annuities	257,526	273,362
Nonprofit agency funds	45,291,179	44,080,336
Total Liabilities	\$46,902,257	\$44,849,532
Total Net Assets	\$316,861,340	\$316,739,559
Total Liabilities and Net Assets	\$363,763,597	\$361,589,091

June 30, 2023



This chart illustrates the performance of the DCF's Flagship Long-Term Pool. The above financial data is unaudited and has been prepared by management based on the company's internal records.

Our Team

PRESIDENT & CEO

Stuart Comstock-Gay
scomstock-gay@delcf.org
302.504.5228

EXECUTIVE OFFICE

Terri Waller
Executive Assistant/Office Manager
twaller@delcf.org
302.504.5221

COMMUNITY IMPACT

Sarah Hensch
Executive Vice President for
Strategic Engagement
shensch@delcf.org
302.504.5267

Maggie Oda
Program Director, Health
moda@delcf.org
302.504.5229

Yolanda Rushdan
Senior Program Officer, Community Impact
yrushdan@delcf.org
302.504.5239

Kelly Sheridan
Grant & Scholarship Coordinator
ksheridan@delcf.org
302.856.4393

Laura Semmelroth
Bezos Earth Fund Fellow
lsemmelroth@delcf.org

FINANCE & OPERATIONS

Joyce Darling
Vice President for Finance & Administration
jdarling@delcf.org
302.504.5251

Rebecca Elzey
Senior Compliance & Operations Officer
relzey@delcf.org
302.504.5234

Chris Chapdelaine
Data and Operations Officer
cchapdelaine@delcf.org
302.504.5242

Michelle Painter
Finance and Operations Coordinator
mpainter@delcf.org
302.504.5227

Jacqueline Mwangi
Accountant
jmwangi@delcf.org
302.504.5220



The DCF Team relaxing after the annual staff retreat during the summer of 2024.

COMMUNICATIONS AND MARKETING

Robbie Tarpley Raffish
Vice President, Communications
for Marketing
robbie@delcf.org
302.504.5226

Mari Pack
Director of Communications
and Marketing
mari@delcf.org
302.504.5225

PHILANTHROPIC SERVICES

Mike DiPaolo
Vice President for Philanthropy &
Southern Delaware
mdipaolo@delcf.org
302.355.6933

Maribeth Przywara
Director of Advancement
mprzywara@delcf.org
302.504.5223

Jessica Gordon
Philanthropy Officer for Southern
Delaware
jgordon@delcf.org
302.856.4393

AJé English
Philanthropy Officer for Northern
Delaware
302.504.5224
aenglish@delcf.org

Cassie DiSabatino
Donor Services Coordinator
cdisabatino@delcf.org
302.504.5230

CONTACT US

Wilmington

Mailing Address:
PO Box 1636, Wilmington, DE 19899

Office:
100 W. 10th Street, Suite 115
Wilmington, DE 19801
Phone: 302.571.8004
Fax: 302.467.2509

Lewes

Mailing Address:
PO Box 1636, Wilmington, DE 19899

Office:
302 Savannah Road
Lewes, DE 19958
Phone: 302.856.4393
Fax: 302.856.4367

FOLLOW US ON SOCIAL MEDIA

Linkedin:
@delcommunity

Facebook:
facebook.com/DelawareCF

Instagram:
@delaware_community_foundation

Website:
www.delcf.org

SUPPORT THE DCF WITH YOUR DONATION AT WWW.DELCF.ORG



